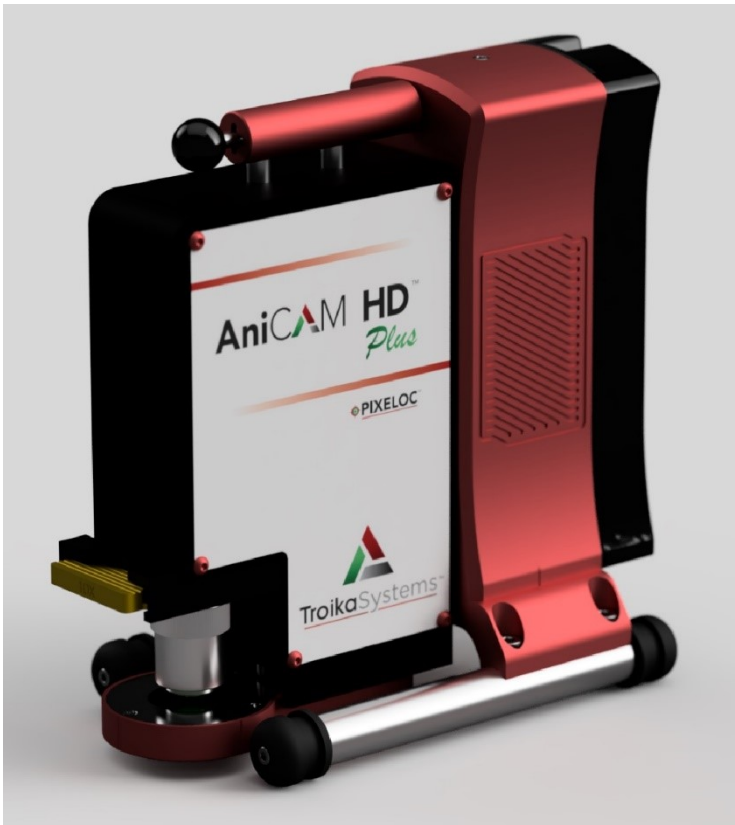
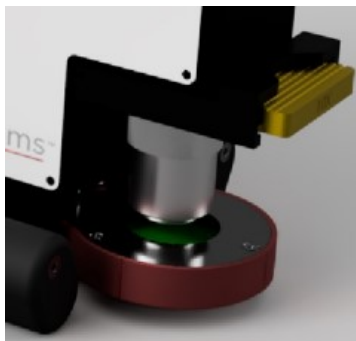
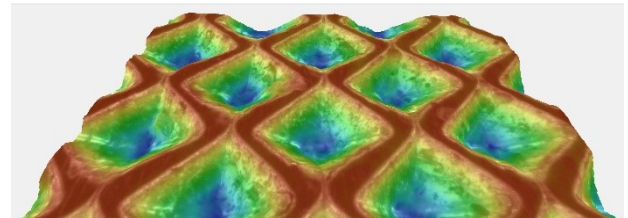
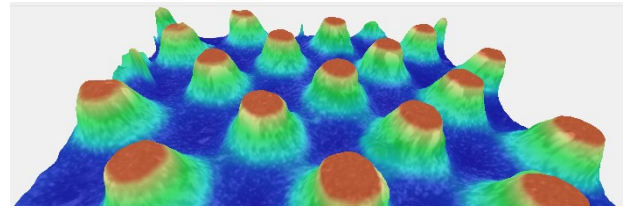
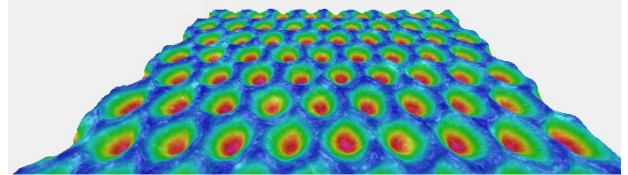


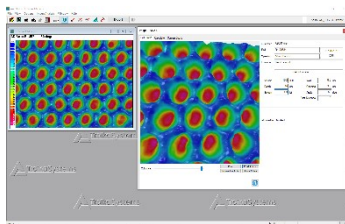
Introducing the NEW AniCAM HD™ *Plus*



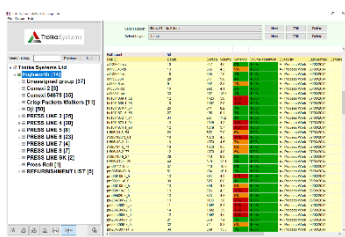
Simple to use, accurate and repeatable device for Anilox Rolls, Gravure Cylinders and Flexoplates



New Kinematic Quick-release lens fitting system guarantees accurate lens placing time after time.



Improved, modern, user-friendly Software for simple ease of use.



Intuitive Roll Management Database; track condition of Anilox Rolls or Cylinders easier with colour defined values.

- Quick set up; no setting up required, just place on the roll and hit 3D Scan button.
- Automatic Focussing
- Automatic Lighting
- Easy to use analysis features
- Measures a wide range of line screens from 100lpi to 1800lpi
- Status LED lighting to show when device is ready to scan
- Integrated Battery giving 8hrs of continuous use
- Multiple reporting templates
- Highest resolution Graphics
- One click to save reports
- Ideal for use in both production and quality control areas.