

Laser Specification Capability

Roll Outside Diameter (OD) Maximum.....39.0 Inches
 Engraving Face Maximum.....236.0 Inches
 Total Tool Length Maximum.....275.0 Inches
 Tool Weight Maximum.....15000.0 Pounds

Experienced Engravers Utilizing the Latest Technology and offering the Highest Quality

Interflex Laser Engravers

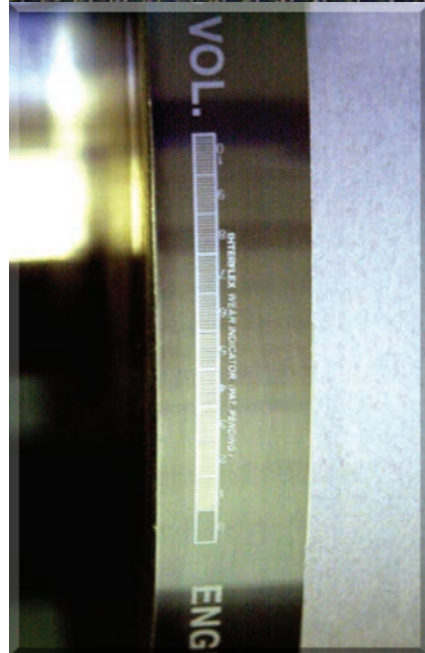
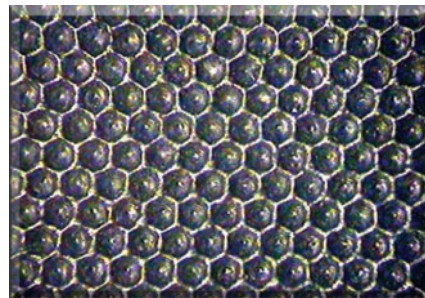
provides industry-leading products in High Definition Anilox™ (HD Anilox™) roll engravings.

HD Anilox are manufactured using the latest in fiber optic engraving technology.

Customers have reported that they print much cleaner using High Definition Anilox™ rolls and have experienced less press downtime to clean plates resulting in higher levels of quality and productivity.

*High Definition Anilox® Reg. No. 3,263,511
 *HD Anilox® Reg. No.3,166,908

Interflex also offers our Patented Volume Control Indicator that monitors ink volumes, wear, and plugging.



Corporate Headquarters

175 Tradd Street
 Spartanburg, SC 29301
 Phone: (864) 576-1042
 Toll Free: (800) 624-1985
 Fax: (864) 576-1119
 www.laserengrave.com

Interflex National Sales Office & Technical Support

2830 Curry Court
 Green Bay, WI 54311
 TOLL FREE (800)-624-1985

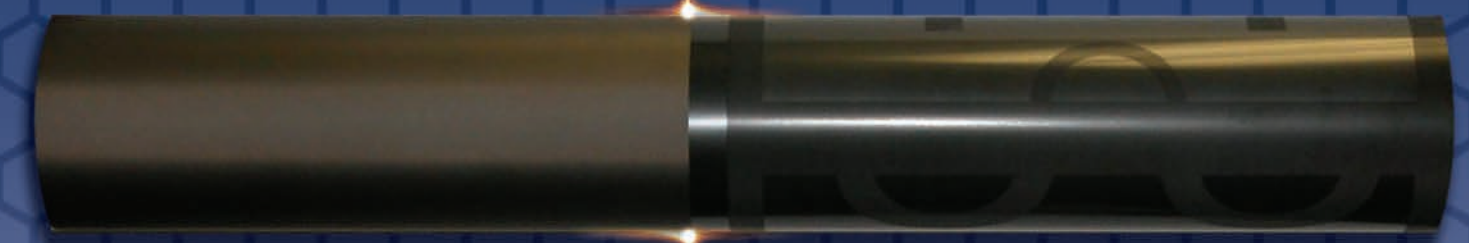
Our technical support team spans six offices in the United States, located in:

Atlanta, GA • Fort Wayne, IN
 Green Bay, WI • Louisville, KY
 Philadelphia, PA • Spartanburg, SC

LPI 60° & 30°	Volume (BCM)	
	Std	Max
75	30.0	50.0
100	25.0	35.0
120	20.0	32.0
150	15.0	25.0
180	14.0	22.0
220	10.0	15.0
260	8.0	13.0
300	7.5	12.5
360	7.0	10.1
400	5.5	8.0
460	5.0	8.0
500	4.2	7.5
550	4.0	6.9
600	3.5	6.5
700	3.0	5.2
800	2.8	4.2
900	2.5	3.6

High Definition Anilox

1000	2.2	3.6
1100	2.0	3.2
1200	2.0	2.8
1300	1.6	2.4
1400	1.5	2.0
1500	1.4	1.8
1600	1.2	1.7



ENGRAVING QUALITY THROUGH EXPERIENCE AND TECHNOLOGY

ENGRAVING QUALITY THROUGH EXPERIENCE AND TECHNOLOGY

Our History



Interflex Headquarters, Spartanburg, South Carolina



National Sales Office, Green Bay, Wisconsin

Interflex Laser Engravers began in 1995 with a vision to provide the flexographic industry with superior service and quality of ceramic anilox engravings. Since inception, **Interflex** has built a cohesive team from diverse backgrounds within the engraving industry. **Interflex** strives to provide its customers with the highest level of service, as well as exceeding their expectations. **Interflex** continually seeks process improvement through research and investment in the latest technology.

Our main headquarters is located in Spartanburg, South Carolina along with technical offices in the northeast, south, and midwest. Our National Sales Office and tissue/towel embossing lab lines are located in Green Bay, Wisconsin.

Today, **Interflex** is a leader in the flexographic industry as a supplier of ceramic anilox engravings and the paper tissue/towel industry for laser engraved embossing rolls and sleeves.

Check out our new app!



Download our Interflex Anilox Laser Calcs App to handle all of the calculations in your Anilox process. The app will quickly calculate coating weight, plate LPI, and metric/inch. Plus you can easily access contact information for our Technical Sales Team and our address.

Simply search for **Interflex Laser** in the App Store or Google Play!

Manufacturing Process

Each incoming roll is inspected for repair needs and diameter runout via micrometer.



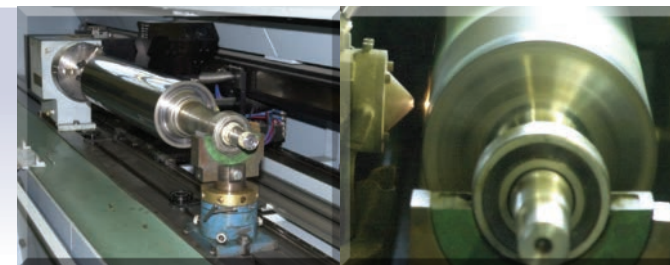
The surface is then prepared for correct size and appropriate corrosion resistance. This fresh surface is then thermally sprayed with a plasma process containing ceramic particulate.



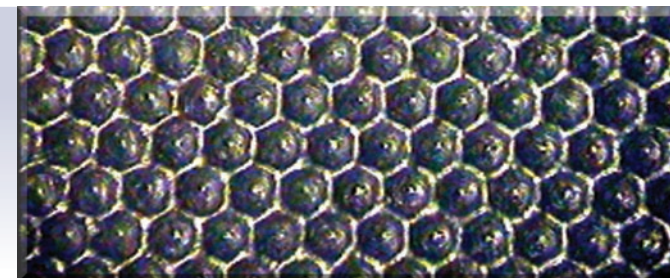
The ceramic roll is then polished to a 2.00 Ra mirror finish via a vibrating diamond head.



The polished roll is then mounted on the latest technological laser engraving machine, checked for a tolerance of .0002 TIR, and the roll surface is engraved to the desired specification.



The final product undergoes a series of pass/fail inspection criteria before being shipped to the customer.



Gravure / Coating Applications

Gravure

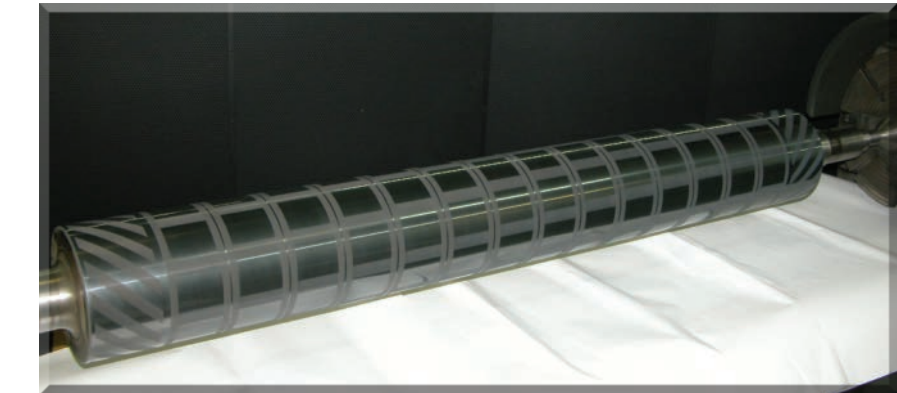
Laser engraved ceramic gravure coating rolls are a specialty service provided by Interflex Laser Engravers. Our experience with handling graphics, coupled with our background in rotogravure and surface finishing, now offer the coating industry a robust solution to the problems associated with conventional copper and chrome engravings.

Question

Are you having problems with your coating consistency or rolls de-chroming in the coating process? How much are you spending on de-chrome / re-chrome and or possible re-engage due to these problems?

Solution

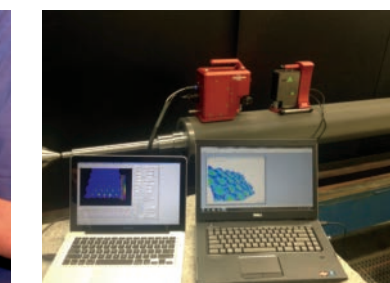
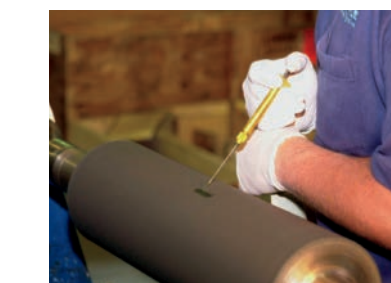
Try a laser engraved ceramic coating for a much more consistent coat weight and 10x the process life compared to conventional chrome-plated copper engravings.



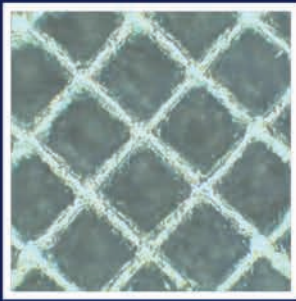
Sales-Technical Service

Each team can perform roll audits, measure roll statistics, and provide a site visit. Each visit results in a deliverable PowerPoint presentation with a photographic record of the visit, and values.

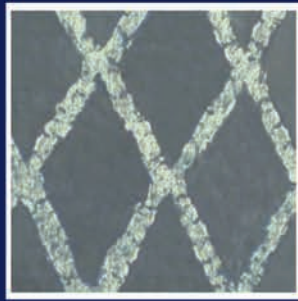
The plant in Spartanburg, SC also has a technical staff that is on call for our customers and sales team to assist in technical support.



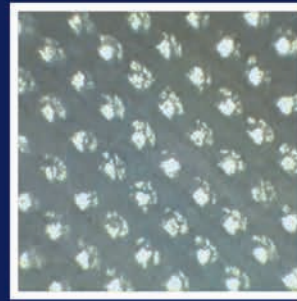
QC Measurements - Conventional Liquid Volume - Electronic 3DQC & AniCam



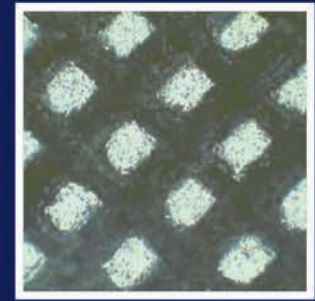
Diamond



High Volume Diamond



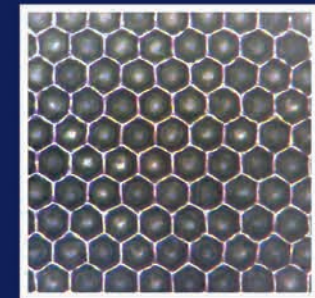
Reverse Engraving



Rectangle Post

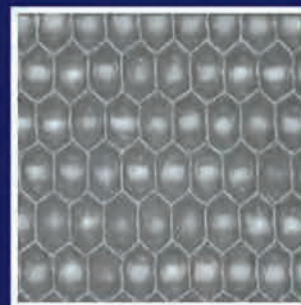
Custom Ceramic Anilox and Gravure Laser Engravings

INTERFLEX
l a s e r e n g r a v e r s
www.laserengrave.com

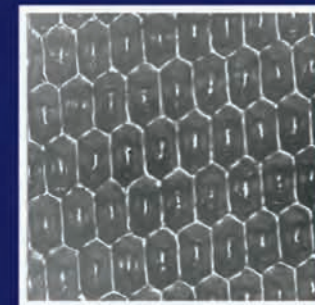


High Definition Flexo

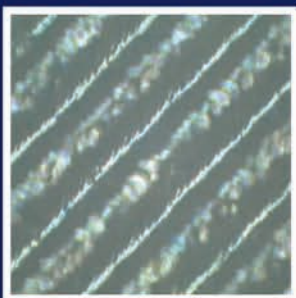
Contact Interflex with your unique process specification needs at: Info@laserengrave.com or Call 1-800-624-1985



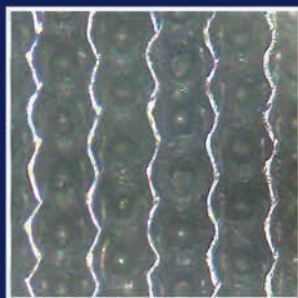
Elongated Anilox



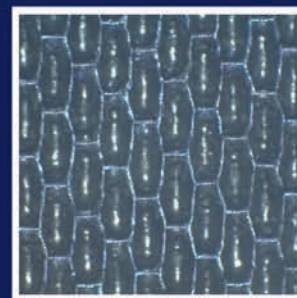
Stepped Long Hex



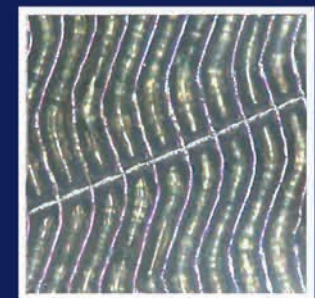
Custom Trihelical



30° Interrupted Channel



uvFlex



Custom Channel Wave



CUSTOM CELL DEFINITIONS

HIGH DEFINITION FLEXO- High line count, high volume engraving for gravure quality print. Works great for combination work and keeps plate clean. Grind of ink is critical.

DIAMOND(S)- Exclusive to gravure and coating applications. Medium to high volumes, polished flat to roll surface for clean wipe, very little doctor blade wear.

REVERSE/POST- Exclusive to coatings and all over print applications. Has excellent release of viscous materials and ease of clean up.

ELONGATED ANILOX- Cell is modified from the standard 60° Hex, cell is stretched in the machine direction which allows improved release, higher volumes, and ease of clean up.

STEPPED LONG HEX- Improved alternative to the elongated hex. The geometry and placement is developed to improve doctor blade wear, seating, and help reduce the chance of chatter. Provides an overall consistent laydown. Can be engraved in 250-1200 LPI range. Used mainly in printing.

CUSTOM TRIHELICAL- A popular ceramic alternative to the conventional copper chrome mechanical engravings. Much improved life of engravings in abrasive applications. High ROI on reduced rework or de-rechrome issues.

30° INTERRUPTED CHANNEL- Interflex's most popularly used custom cell alternative, has nice volume and laydown characteristics to assist with pin hole issues and cleans up very easily. Can be used upon low to high volume needs in both printing and coating.

CUSTOM CHANNEL WAVE- Custom graphic designed improved cell formation of the "wave" or "weave" engravings. This engraving's "closed" structure has a specific volume rather than a range of volume...this gives you process performance and repeatability. Mostly used in corrugated industry, can be used in coatings and heavy print applications where coverage is necessary.

UVFLEX- An Interflex specialized engraving that reduces "spitting" or "misting" issues when using UV inks. The stepped design as well as the engraving angle helps reduce the chance of ink building up on the wrong side of the doctor blade.

Corporate Headquarters

175 Tradd Street
Spartanburg, SC 29301
Phone: (864) 576-1042
Toll Free: (800) 624-1985
Fax: (864) 576-1119
www.laserengrave.com

Interflex National

Sales Office & Technical Support

2830 Curry Court
Green Bay, WI 54311
TOLL FREE (800)-624-1985

Our technical support team spans six offices in the United States, located in:

Atlanta, GA • Fort Wayne, IN
Green Bay, WI • Louisville, KY
Philadelphia, PA • Spartanburg, SC

ENGRAVING QUALITY THROUGH EXPERIENCE AND TECHNOLOGY